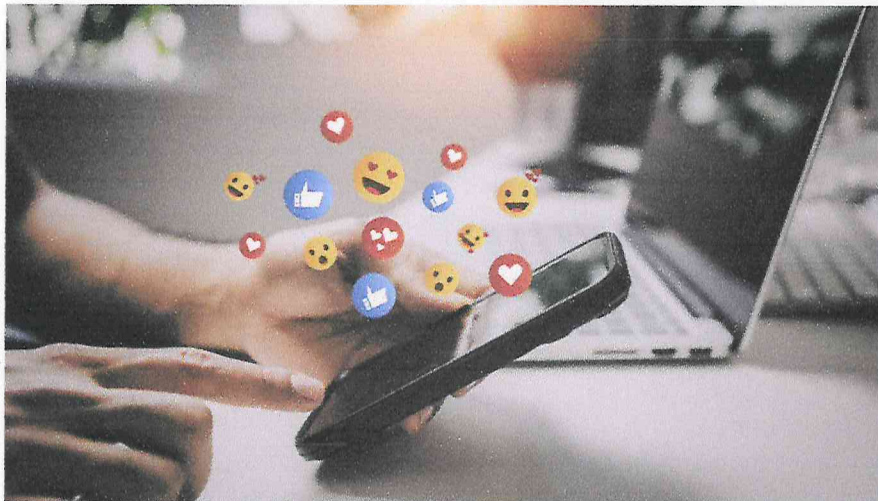




# WhatsApp group, Facebook, YouTube Channel and Telegram link



**JSS INSTITUTE OF EDUCATION**

**Kowdalli, Sakaleshpur Tq, Hassan Dist – 573 134**



JSS Mahavidyapeetha, Mysore - 04

## JSS INSTITUTE OF EDUCATION

(Recognized by the NCTE and Affiliated to University of Mysore, Mysore)

Sakleshpur – 573 134, PB No 26, Hassan Dist.

Email: [jssioebedskp@gmail.com](mailto:jssioebedskp@gmail.com) website: <https://jssioebedskp.org.in> Phone No: 97405 91647

### SOCIAL MEDIA LINKS RELATED TO OUR COLLEGE

Sl.No.	Link Details
1	<b>Annual Academic plan Link</b>
	<a href="https://jssioebedskp.org.in/students_corner/College%20academic%20plan_odd%20sem_23-24.pdf">https://jssioebedskp.org.in/students_corner/College%20academic%20plan_odd%20sem_23-24.pdf</a>
	<a href="https://jssioebedskp.org.in/students_corner/College%20Academic%20Plan_Sem2_23-24.pdf">https://jssioebedskp.org.in/students_corner/College%20Academic%20Plan_Sem2_23-24.pdf</a>
	<a href="https://jssioebedskp.org.in/students_corner/College%20Academic%20Plan_Sem4_23-24.pdf">https://jssioebedskp.org.in/students_corner/College%20Academic%20Plan_Sem4_23-24.pdf</a>
2	<b>Institution Facilities Link</b>
	<a href="https://jssioebedskp.org.in/facilities">https://jssioebedskp.org.in/facilities</a>
3	<b>Cell/Club Reports Link</b>
	<a href="https://jssioebedskp.org.in/students_corner/Clubs_Committees_and_Association_information.pdf">https://jssioebedskp.org.in/students_corner/Clubs_Committees_and_Association_information.pdf</a>
4	<b>JSSIOE YouTube Channel Links</b>
	<a href="https://www.youtube.com/@jssioebedskp">https://www.youtube.com/@jssioebedskp</a>
5	<b>JSSIOE Face Book Link</b>
	<a href="https://www.facebook.com/jssioesakleshpur?mibextid=ZbWKwL">https://www.facebook.com/jssioesakleshpur?mibextid=ZbWKwL</a>
6	<b>JSSIOE Telegram Link</b>
	<a href="https://t.me/+zWKA2weaHo4YjI1">https://t.me/+zWKA2weaHo4YjI1</a>
7	<b>JSSIOE Instagram Link</b>
	<a href="https://www.instagram.com/jssioesakaleshpur/">https://www.instagram.com/jssioesakaleshpur/</a>

  
PRINCIPAL

J.S.S. Institute of Education  
B. 26, SAKALESHPUR-573134  
Hassan Dist.